

The HEINE Optotechnik range of loupes is ideal for a wide range of industrial applications. The range includes keyhole loupes, loupes for surface inspection and spectacle- or head-worn loupes:

Keyhole Loupes

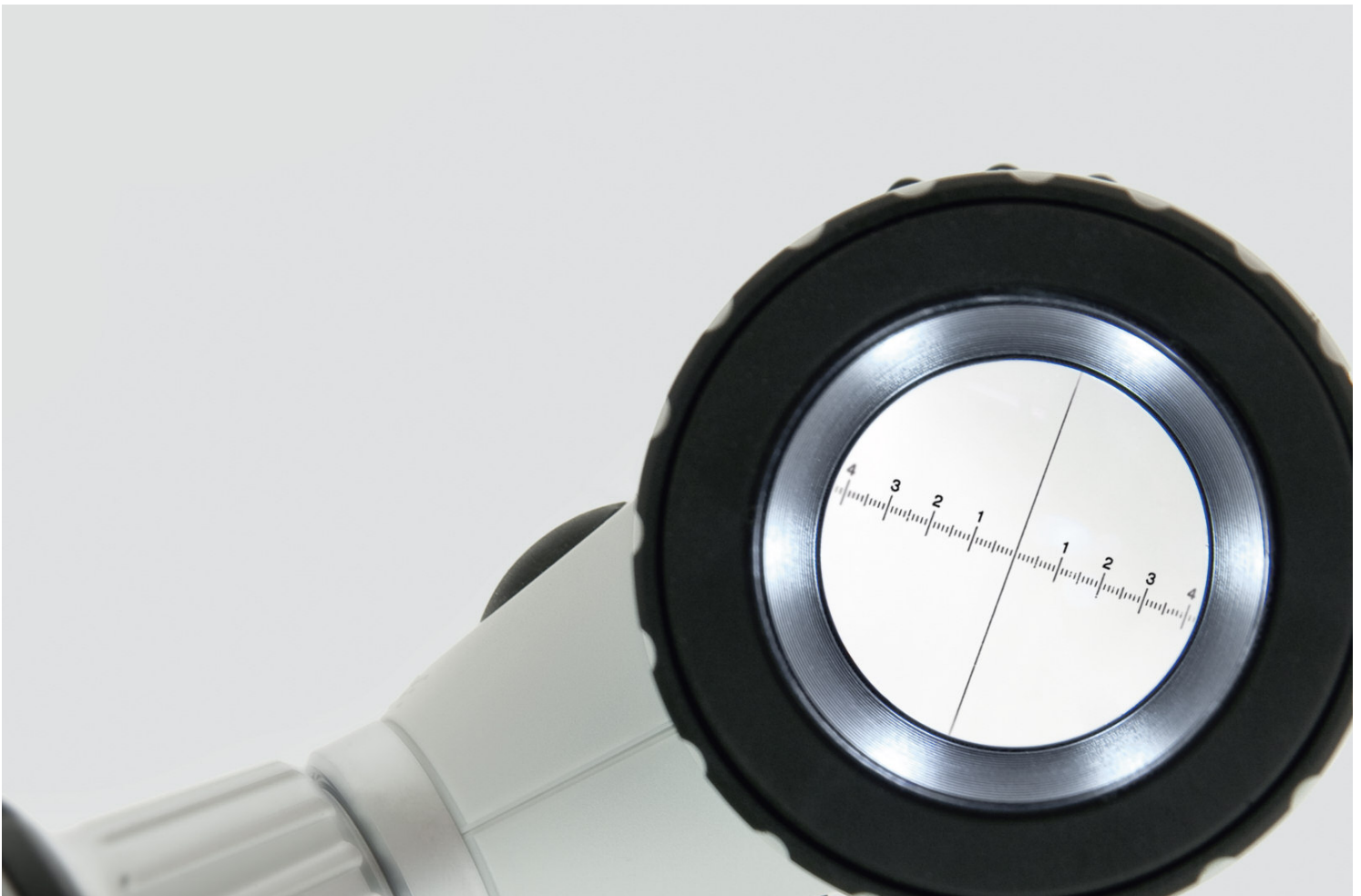
The HEINE Keyhole Loupe is developed from medical technology and, with its unique specification, provides a view in openings from 0.3mm and in cavities such as locks and jets. It also serves as an illuminated loupe for various working distances.

Illuminated Loupes:

The range includes instruments from 5 – 10x magnification for incident light microscopy of surfaces and photo-documentation.

Binocular Loupes:

HEINE Binocular Loupes set new standards. Innovative design, together with High-Tech materials and production process all contribute to the exceptional quality of the image produced. HEINE Binocular Loupes reveal the tiniest details and avoid eye strain at the same time. Their ergonomic design combined with the choice of working distance and viewing angle makes them easy to use even over long periods. As a general rule: The lower the magnification, the larger the field of view.





HEINE Keyhole Loupes

For apertures from 0.3mm dia. Working distance from 5 to 250mm

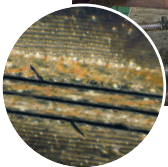


- ∴ Concentrated XHL Xenon Halogen light for small cavities, cracks, bores from 0.3mm diameter.
- ∴ Up to 10x magnification: Can also be used as an illuminated loupe for surface examination.
- ∴ 17 lenses on the lenswheel: For examination of objects at a distance from 5 to 250mm.
- ∴ With illuminated distance-meter.
- ∴ Correction for examiner's refractive error.

Keyhole Loupe	2.5V	3.5V
Keyhole Loupe with bulb, without handle	T-001.24.100	T-002.24.105
Extension cord automatic plug (only 3.5V)		T-000.99.230
XHL Xenon Halogen spare bulb	T-001.88.042	T-002.88.070



Inspection-Set A	2.5V
Consisting of: mini Keyhole Loupe with mini 2000 Battery handle (with batteries), XHL Xenon Halogen spare bulb 2.5V in transparent pack	T-510.10.052
XHL Xenon Halogen spare bulb 2.5V	T-001.88.042



Power and light sources

∴ mini 2000 Battery handle for 2 IEC LR6 batteries	2.5V
∴ BETA Battery handle with 3 LR14 dry batteries	3.5V
∴ Rechargeable handles NiMH or Li-ion	



mini Illuminated Loupes, 5x and 8x



A truly "mini" instrument, weighing only 170g, which is handy for the pocket. The head is made of metal, the handle of high-impact thermoplastic.

mini Illuminated Loupe, 5x and 8x	2.5V
mini Illuminated Loupe with 5x lens complete with mini 2000 Battery handle	T-001.82.102
same, but with 8x lens	T-001.82.202
mini Loupe Head with bulb, without handle	T-001.82.011
Aplanatic lens 5x	T-000.14.510
Achromatic lens 8x	T-000.14.511
XHL Xenon Halogen spare bulb	T-001.88.034

Inspection Set B/1

Consisting of:

mini Illuminated Loupe with 5x lens , XHL Xenon Halogen spare bulb with mini 2000 Battery handle in transparent pack	T-511.10.052
-----------------------------------------------------------------------------------------------------------------------------------	---------------------

Inspection Set B/2

(similar to B/1), except with **8x lens** with

mini 2000 Battery handle in transparent pack	T-511.19.052
----------------------------------------------	---------------------

mini Illuminated Loupe Head, 10x



mini Illuminated Loupe Head, 10x	2.5V
mini Illuminated Loupe Head, 10x, focusable, with adaptor for measuring scale, mini 2000 Battery handle XHL Xenon Halogen bulb	T-001.82.302
mini Illuminated Loupe Head, 10x, focusable, with adaptor for measuring scale, XHL Xenon Halogen bulb	T-001.82.300
Universal measuring scale	T-000.14.509
XHL Xenon Halogen spare bulb	T-001.88.034

Inspection Set B/3

Consisting of:

focusing mini Illuminated Loupe Head, 10x , 1 XHL Xenon Halogen spare bulb with mini 2000 Battery handle in transparent pack (without measuring scale)	T-511.11.052
---------------------------------------------------------------------------------------------------------------------------------------------------------------------	---------------------





HEINE DELTA 20® LED Illuminated Loupe 10x

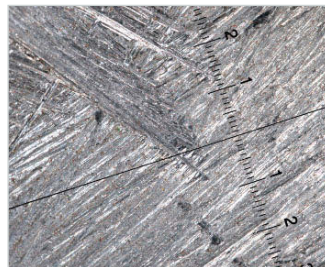


Using an instrument of the highest quality is the best way to ensure the most accurate diagnosis. Every DELTA 20 Illuminated Loupe Set incorporates lessons learned from our years of experience as Market Leader. All of these instruments represent state-of-the-art technology in optics, design, ergonomics and functionality.

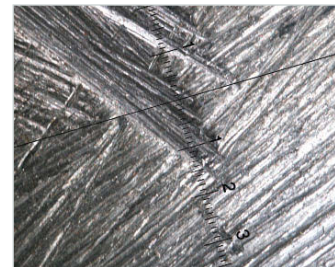
With high-resolution precision optics and an exclusive illumination system, the DELTA 20 Illuminated Loupe is the ultimate tool in the examination of surfaces and provides a significant diagnostic contribution in the examination and documentation of surfaces of all kinds.

The unique achromatic lens system reveals tiny variations in surface coatings at 10x magnification as a highly-detailed, undistorted image. High-resolution digital photography is easy and affordable.

LED illumination close to daylight. 6 LEDs or, alternatively, illumination reduction with push down button to 3 LEDs for improved contrast. Virtually unlimited working life. A further unique feature of the DELTA 20 Illuminated Loupe is the ability to select full illumination for a clear view of the whole area under examination with 6-LEDs or, alternatively, lateral illumination using 3-LEDs to give improved contrast to enable identification of fine changes in deeper structures.



Metal surface photographed with full illumination (6 LEDs). $\frac{1}{10} = 1 \text{ mm}$



Metal surface photographed with incident light for better contrast (3 LEDs).



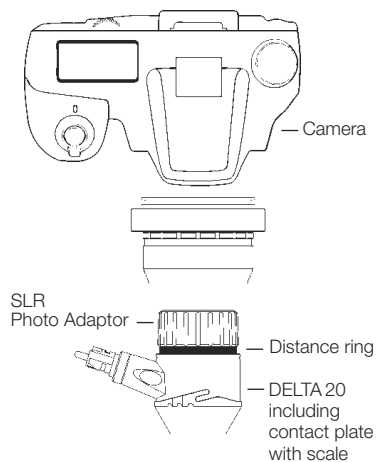
Contact Plates

- ⚙ Large 23 mm dia. contact plates with and without scale for large field of view.
- ⚙ Small contact plate 8 mm Ø dia. for inaccessible areas (see pictures below).
- ⚙ Digital photography possible.
- ⚙ Easy to change plates, firm fit to the instrument.



Small contact plate 8 mm Ø dia. for inaccessible areas.

HEINE DELTA 20® LED Illuminated Loupe 10x



Specifications:

✦ Illumination:	LED (6 Diodes)
✦ Magnification:	10x
✦ Image size:	23mm dia.
✦ Special features:	3D view can be selected. Camera adaptors for digital SLR cameras. Adjustable Eyepiece. Individual focusing, range of correction - 6 to + 6 dpt.



[01]



[02]



[03]

[04]

[05]



[06]



[07]



[08]

DELTA 20 LED Illuminated Loupe 10x

3.5V LED

with contact plate 23 mm dia. with scale [01]

T-008.34.207

DELTA 20 Set

Contents: DELTA 20 LED Illuminated Loupe 10x, BETA Battery Handle, Extension cord automatic plug, Cleaning Kit, Case [02]

T-530.28.123

Accessories

Contact plate, 23 mm dia. without scale [03]

T-000.34.203

Contact plate, 23 mm dia. with scale [03]

T-000.34.206

Small contact plate, 8 mm dia. [04] for inaccessible areas

T-000.34.205

SLR Photo Adaptor Canon [05]

T-000.34.185

SLR Photo Adaptor Nikon [05]

T-000.34.186

SLR Photo Adaptor Olympus [05]

T-000.34.187

Extension cord automatic plug [06]

T-000.99.230

BETA Beltclip for BETA handle [07]

T-000.99.008

Cleaning Kit [08]

T-000.26.001

Case, empty

T-530.00.000

Power and light sources

✦ BETA Battery handle with 3 LR14 dry batteries

✦ Rechargeable handles NIMH or Li-ion

3.5V



HEINE C 2.3® Binocular Loupes

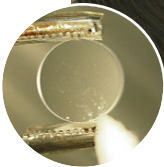


C 2.3

- ∴ **Crisp, clear images.** Multi-coated, scratch-resistant silica glass lenses produce crisp, clear images.
- ∴ **Flexibility for precise adjustment.** Independently adjustable PD controls ensure precise alignment of the optics.
- ∴ **Low profile design.** Compact, low profile optics allow the user to easily look over the loupes for non-magnified view.
- ∴ **Super lightweight and comfortable – only 46g.** Flexible coil temples wrap-around to fit the user's anatomy securely and comfortably. Spring-loaded temples will adjust to the user's anatomy. Light weight metal frame.
- ∴ **The ideal all-purpose loupe.** The feather-light weight, low-profile design and low cost of the C 2.3 Loupe make it the ideal all-purpose loupe.
- ∴ **Working distance.** 340mm or 450mm (13 or 18 inches).

Specifications:

∴ Lens system	Aplanatic	
	C 2.3/340	C 2.3/450
∴ Magnification	2.3x	2.3x
∴ Working distance	340mm	450mm
∴ Field of view Ø	110mm	130mm
∴ Depth of field	120mm	190mm
∴ Weight	46g	46g



C 2.3 /340 mm

User's refractive error/
Effective working distance

+2	440mm
+1	390mm
0	340mm
-1	300mm
-2	270mm

C 2.3 /450 mm

User's refractive error/
Effective working distance

+2	670mm
+1	560mm
0	450mm
-1	420mm
-2	370mm

C 2.3 Binocular Loupe

C 2.3/340 Loupe in case	T-000.32.039
C 2.3/450 Loupe in case	T-000.32.202



Accessories

C 2.3 Binocular Loupe

Detachable protective lenses
To protect the optics of the C 2.3 loupes.

T-000.32.097

