



[ ORDERING INFORMATION ]

**SFT4-720 Endoscope**

SFT4-720 Endoscope in transport and storage case **T-00.26.741**

**Accessories**

LED ScopeLight **T-08.26.075**

AV Adaptor incl. 3.5V XHL Xenon Halogen bulb **T-02.26.402**

XHL Xenon Halogen Spare bulb 3.5V **T-02.88.078**

AV Adaptor incl. 12V XHL Xenon Halogen bulb **T-05.26.402**

XHL Xenon Halogen Spare bulb12V **T-05.88.103**

110° Angled Side View Adaptor for SFT4-720 Endoscope **T-00.26.743**

90° Angled Side View Adaptor for SFT4-720 Endoscope **T-00.26.744**

Rubber Cap for Spectacle Wearers **T-00.26.175**

Camera Adaptor 28mm **T-00.26.186**

Camera Adaptor 49mm **T-00.26.176**

Camera Adaptor 52mm **T-00.26.177**

Camera Adaptor 55mm **T-00.26.178**

CCD Camera Adaptor F = 35mm **T-00.26.190**

A-Cam camera with processor (available systems: PAL or NTSC, please specify when ordering) **T-00.31.201**

Connecting Cord for Accubox 1.8m with Connector (Cinch, Automatic) **T-00.99.241**

Connecting Cord for Cigarette Lighter Socket, 5m **T-00.99.246**

Extension Cord automatic plug **T-00.99.230**

12V Battery Pack Accubox I with battery and transformer **T-05.99.629**

BETA Battery handle 3,5V **T-02.25.369**

BETA Belt Clip for Battery handle **T-00.99.008**

HK 7000 F.O. Projector incl. XHL Halogen Spare bulb **T-96.15.121**

Light Guide 2.5m **T-03.26.403**

XHL Halogen Spare bulb 150W for HK 7000 F.O. Projector **T-96.15.102**

Fuse for HK 7000 F.O. Projector **T-96.15.110**

Adaptor for connection to Wolf Light Guides **T-00.26.407**

Adaptor for connection to Storz, Olympus, Winter & Ibe Light Guides **T-00.26.408**

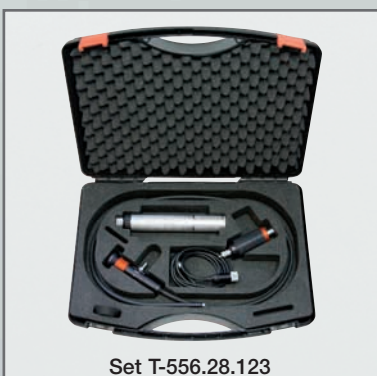
Transport and storage case for SF, SFM, SFT Endoscopes **T-539.00.00**

**SFT4 - 720 Endoscope Sets**

SFT4-720 Endoscope-Set, 3.5V, contents:  
SFT4-720, BETA Battery handle 3.5V, AV Adaptor, Spare bulb 3.5V,  
Rubber Cap, transport and storage case **T-556.20.123**

SFT4-720 Endoscope-Set, 12V, contents:  
SFT4-720, Connecting Cord for Cigarette Lighter Socket, AV Adaptor,  
Spare bulb12V, Rubber Cap, transport and storage case **T-556.50.246**

SFT4-720 Endoscope, LED ScopeLight,  
BETA Battery handle 3.5V, extension cord automatic plug,  
Rubber Cap, transport and storage case **T-556.28.123**



Set T-556.28.123

# HEINE QUALITY

MADE IN GERMANY

A company makes history and gives a name to outstanding product quality: HEINE. Founded in 1946, family owned, rich in tradition and today international market leader in a complete range of diagnostic instruments for medical and technical applications. HEINE products meet all international standards (ISO/CE) and represent the leading edge in precision and ergonomic design. Ongoing dedication to research and development has created a solid and diverse technology base for continued quality and product leadership. Over 500 employees worldwide contribute to this success.



We reserve the right to change specifications without notice.

Your distributor

07/07. tec 0607e

## HEINE

HEINE Optotechnik GmbH & Co. KG · Kientalstr. 7 · 82211 Herrsching · Germany  
Tel. +49 (0) 8152/38-0 · Fax +49 (0) 8152/38-202 · E-Mail: info@heine.com · [www.heinetech.com](http://www.heinetech.com)



**HEINE** QUALITY  
MADE IN GERMANY

**HEINE SFT4-720®**  
Flex & Twist Endoscope



## ∴ HEINE SFT4-720® Flex & Twist 4,2mm Endoscope

Flexible Fiber Optic Endoscope with rotating probe.

Waterproof, oil- and fuel resistant probe. No lens fogging. No heat generation at the tip of the instrument.  
Fully-portable with integrated Xenon Halogen- or LED-illumination.



**Accessories** for the **SFT4-720 Flex & Twist Endoscope:**



A-Cam Camera with processor



Camera Adaptor



CCD Camera Adaptor



Angled Side View Adaptor

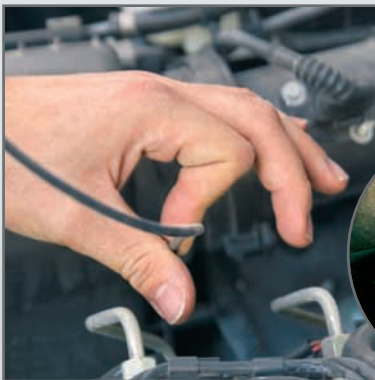


Light Guide



HK 7000 F.O. Projector

With the angled side view adaptor a full 360° view with the effortless Flex & Twist feature.



**Specification:**

- ✦ **Working length:** 720mm
- ✦ **Diameter:** 4,2mm
- ✦ **Radius of curvature:** 30mm
- ✦ **Brightness:**  
From 12000 lx with 3,5V XHL bulb  
up to 80000lx with F.O. Projector
- ✦ **Working distance:** From 5mm
- ✦ **Direction of view:** 0°
- ✦ **Field of view:** 40°
- ✦ **Attachable Angled Side View Adaptors 90° and 110°**  
(optional Accessory)

**Light and power supply options:**

- ✦ **3.5V version\*:**
  - BETA Battery handle for three LR 14 Alkaline batteries
  - with 3.5V XHL bulb, average working time with new batteries is approx. 8 hours
  - with LED ScopeLight (working time up to 24 hours)
- ✦ **12V version\*:**
  - Connecting Cord for cigarette lighter socket (5 m)
  - Rechargeable Battery Pack (Accubox I) with brightness control  
(2 hours working time with full charge)
- ✦ **220V Version:**
  - HK 7000 F.O. Projector (150W) and light guide

\* For 3.5V and 12V versions with XHL bulb an AV adaptor is required. See ordering information.





Accubox I with Connecting Cord

Connecting Cord for Cigarette Lighter Socket

LED ScopeLight

Extension Cord automatic plug

AV Adaptor

BETA Battery handle

BETA BeltClip

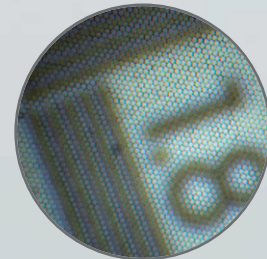
**Unique Features:**

- ∴ **High resolution image** from 17000 optical fibers
- ∴ **360° view** with the effortless Flex & Twist feature with a side view adaptor
- ∴ **Multi-coated**, high-resolution achromatic optics provide a sharply-focused image that covers the entire field of view "edge-to-edge".
- ∴ **Brilliant, bright light**
  - Fully-portable with XHL Xenon halogen bulb (color temperature ca. 3500K) or
  - ∴ **LED ScopeLight** 3,5V (extremely white light, color temperature ca. 5500K)
  - Static use with the F.O. Projector (color temperature ca. 3500K)
- ∴ **Continuously focusable** eyepiece ensures absolutely sharp, crisp images

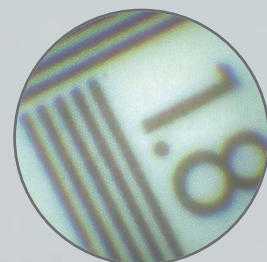
▶ NEW !

**Endoscope Comparison:**

Endoscope with 7400 optical fibers



SFT4-720 Endoscope with 17000 optical fibers



**Compatibility :**

HEINE battery packs and accessories (e.g. camera adaptors) fit all of the new generation SFT4-720 Flex & Twist Endoscope. Conventional Fiber Optic projectors and light guides from other manufacturers can also be connected to the HEINE F.O. Endoscopes using standard adaptors (ACMI-compatible).

**Flexible Endoscope Brightness at a distance of 16 mm**

