

HEINE QUALITY
MADE IN GERMANY

∴ **HEINE SF6-1000[®]**
Semi-flexible Endoscope



∴ **HEINE SF6-1000® Semi-flexible 6 mm Endoscope**

Fiber Optic Endoscope with semi-flexible probe.

Immersible in approved fluids (water and oil). No lens fogging. No heat generation at the tip of the instrument.
Portable application with integrated Halogen- or LED-illumination and portable power source.



[ORDERING INFORMATION]

SF 6 Endoscope

SF 6-1000 Endoscope in Protective carrying case	T-00.26.721
---	-------------

Accessories

Adaptor for connection to Wolf Light Guides	T-00.26.407
Adaptor for connection to Storz, Olympus, Winter & Ibe Light Guides	T-00.26.408
LED ScopeLight	T-08.26.075
AV Adaptor incl. 12 V XHL Xenon Halogen bulb	T-05.26.402
AV Adaptor incl. 3.5 V XHL Xenon Halogen bulb	T-02.26.402
110° Angled Side View Adaptor for SF/SFM Endoscopes	T-00.26.723
90° Angled Side View Adaptor for SF/SFM Endoscopes	T-00.26.724
XHL Xenon Halogen Spare bulb 12 V	T-05.88.103
XHL Xenon Halogen Spare bulb 3.5 V	T-02.88.078

Rubber Cap for Spectacle Wearers	T-00.26.175
Camera Adaptor 49 mm	T-00.26.176
Camera Adaptor 52 mm	T-00.26.177
Camera Adaptor 55 mm	T-00.26.178
Adaptor Nikon Coolpix/Endoscope	T-00.26.186

Connecting Cord for Accubox 1.8 m with Connector (Cinch, Automatic)	T-00.99.241
Connecting Cord for Cigarette Lighter Socket, 5 m	T-00.99.246
Extension Cord automatic plug	T-00.99.230
12 V Battery Pack Accubox I complete with transformer	T-05.99.629
BETA Battery handle 3.5 V	T-02.25.369
BETA BeltClip for Battery handle	T-00.99.008

HK 7000 F.O. Projector incl. XHL Halogen Spare bulb	T-96.15.121
Light Guide 2.5 m	T-03.26.403
XHL Halogen Spare bulb 150 W for HK 7000 F.O. Projector	T-96.15.102
Fuse for HK 7000 F.O. Projector	T-96.15.110

Transport and storage case for SF/SFM Endoscope	T-539.00.000
---	--------------

SF 6 Endoscope Sets

SF 6-1000 Endoscope-Set, 3.5 V, contents: SF 6-1000, BETA Battery handle 3.5 V, AV Adaptor, Spare bulb 3.5 V, Rubber-Cap, transport and storage case	T-538.20.123
--	--------------

SF 6-1000 Endoscope-Set, 12 V, contents: SF 6-1000, Connecting Cord for Cigarette Lighter Socket, AV Adaptor, Spare bulb 12 V, Rubber-Cap, transport and storage case	T-538.50.246
--	--------------

SF 6-1000 Endoscope, LED ScopeLight, BETA Battery handle 3.5 V, extension cord automatic plug, rubber eyepiece, transport and storage case	T-551.28.123
--	--------------

Accessories for the SF 6 Endoscope



Camera Adaptor



90°



110°

Angled Side View Adaptor



Light Guide



HK 7000
F.O. Projector

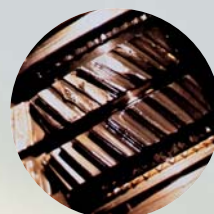
Specification of the SF 6-1000 Semi-flexible Endoscope:

- ✦ **Working length:** 1000 mm.
- ✦ **Diameter:** 6 mm.
- ✦ **Radius of curvature:** 30 mm.
- ✦ **Brightness:** Up to 120 000 lx at a distance of 16 mm.
- ✦ **Working distance:** 10 mm to infinity.
- ✦ **Direction of view:** 0°.
- ✦ **Attachable Angled Side-View Adaptors, optional Accessory:** 90° and 110°.

Light and power supply options:

- ✦ **3.5 V version*:** Battery handle with three LR 14 Alkaline batteries. New set of batteries will give 10 hours of operating time with a 3.5 V XHL bulb or even 24 hours with the LED ScopeLight.
- ✦ **12 V version*:** Connecting Cord for cigarette lighter socket (5 m).
- ✦ **12 V version*:** Rechargeable Battery Pack (Accubox I) with light intensity control.
- ✦ **220 V version:** F.O. projector HK 7000 with light guide: Optimal white light.

* For 3.5 V and 12 V versions with XHL bulb an AV adaptor is required. See ordering information.





Accubox I with Connecting Cord



Connecting Cord for Cigarette Lighter Socket



LED ScopeLight



BETA BeltClip



Battery handle

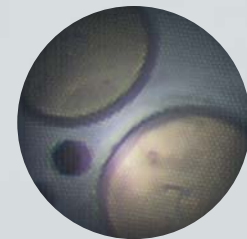
Unique Features of the SF6 Endoscope:

- ∴ **Brilliant, bright light.** 3.5V and 12V versions are 8 times as bright as conventional Endoscopes. 20 times as bright when used in combination with the HK 7000 F.O. Projector.
- ∴ **A high-resolution Image Guide** with 7400 single fibres produces a super-high-resolution image.
- ∴ **A large 50° Opening Angle** ensures a large Field of View.
- ∴ **Multi-coated**, high-resolution achromatic optics provide a sharply-focused image that covers the entire field of view “edge-to-edge”.
- ∴ **Quality**, compact Rod lenses for high light transmission.
- ∴ **Continuously focusable** eyepiece ensures absolutely sharp, crisp images.

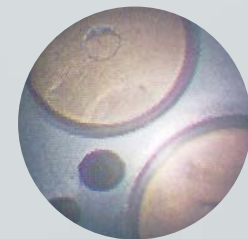
Compatibility:

HEINE battery packs and accessories (e.g. camera adaptors) fit all of the new generation HEINE SF -Endoscopes. Conventional Fiber Optic projectors and light guides from other manufacturers can also be connected to the HEINE F.O. Endoscopes using standard adaptors.

Endoscope Comparison

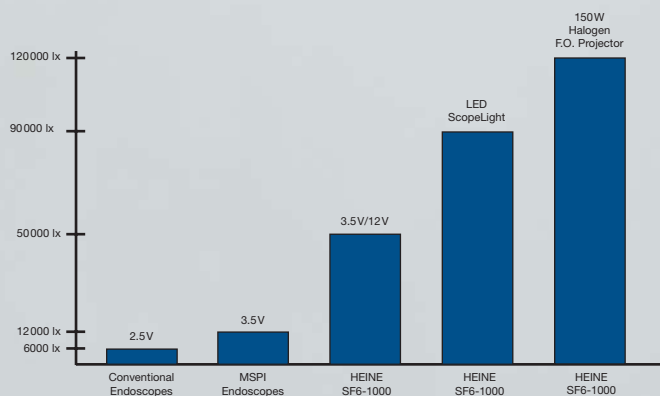


Conventional Endoscope with 3500 Single fibres



HEINE SF 6 Endoscope with 7400 Single fibres

Semi-flexible Endoscope Brightness at a distance of 16 mm



HEINE QUALITY
MADE IN GERMANY

A company makes history and gives a name to outstanding product quality: HEINE. Founded in 1946, family owned, rich in tradition and today international market leader in a complete range of diagnostic instruments for medical and technical applications. HEINE products meet all international standards (ISO/CE) and represent the leading edge in precision and ergonomic design. Ongoing dedication to research and development has created a solid and diverse technology base for continued quality and product leadership. Over 500 employees worldwide contribute to this success.

We reserve the right to change specification without notice.

Your distributor

12/06. tec 7206e

HEINE

HEINE Optotechnik GmbH & Co. KG · Kientalstr. 7 · 82211 Herrsching · Germany
Tel. +49 (0) 8152/38-0 · Fax +49 (0) 8152/38-202 · E-Mail: info@heine.com · www.heinetech.com

